

CHILD CAR SEAT

GROUP 0 / 1 / 2

**Suitable for 0kg to 25kg
(birth to 7 years approx)**



FITTING INSTRUCTIONS

NOTICE

1. This is a "Universal" child restraint; it is approved to ECE Regulation 44.04 for general use in vehicles and will fit most, but not all, vehicle seats.
2. A correct fit is likely if the vehicle manufacturer has declared in the vehicle handbook that the vehicle is capable of accepting a "Universal" child restraint for this group.
3. This child restraint has been declared "Universal" under more stringent conditions than those applied to earlier designs which do not carry this notice.
4. If in doubt, consult either the child restraint manufacturer or the retailer.

Only suitable if the vehicle is fitted with 3-point static, 3-point retractor safety belts, approved to UN/ECE Regulation No. 16 or other equivalent standards.

EXTREME HAZARD

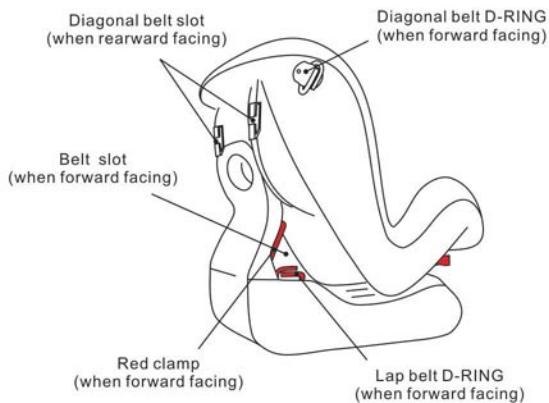
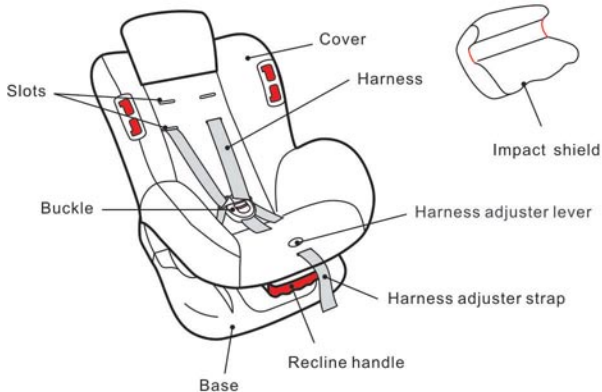
Do not use in passenger seats equipped with airbags (SRS)

WARNINGS

THESE INSTRUCTIONS ARE IMPORTANT. PLEASE READ CAREFULLY AND RETAIN FOR FUTURE REFERENCE.

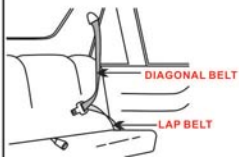
- PLEASE READ THOROUGHLY BEFORE COMMENCING INSTALLATION AS AN INCORRECT INSTALLATION COULD BE DANGEROUS.
- **DO NOT** use this child seat in passenger seats equipped with airbags.
- This child seat can be installed in either a forward or rearward facing position depending on your child's weight. Rearward facing from birth - 10kg, Forward facing 9-25kg. **IMPORTANT:** do not use forward facing before the child's weight exceeds 9kg.
- The safest seating position for this child car seat is on the rear seat of a vehicle.
- Ensure that no part of the seat is trapped in a door or folding seat. If your car has a folding rear seat, ensure that it is correctly latched in the upright position.
- Never use the child seat without fastening the child's harness correctly, and never attempt to use it without fastening it into the car.
- When using the child seat, it is most important that the car seat belt is correctly routed. Ensure the belt straps are not kinked.
- This child seat should be changed when it has been subject to violent stresses in an accident.
- Do not add to or modify the seat in any way.
- Do not leave your child unattended in the seat at any time.
- Car interiors can become very hot when in direct sunlight, it is therefore recommended that the child seat should be covered when not in use. This prevents components, particularly those attached to the child seat, becoming hot and burning the child.
- In the event of an emergency it is important that the child can be released quickly. This means that the buckle is not fully tamper proof and so your child must be taught never to play with the buckle.
- The child seat must not be used without the cover, the cover should not be replaced with any other the one recommended by the manufacturer.
- Luggage and other heavy or sharp objects should be secured in the car. Loose objects are liable to cause injury in the event of an accident.
- Periodically inspect the harness for wear, paying particular attention to attachment points, stitching and adjusting devices.
- Store this child seat in a safe place when it is not being used. Avoid placing heavy objects on top of it. Do not allow your child seat to come into contact with corrosive substances e.g. battery acid.
- Please retain the user guide for future reference in the storage compartment provided in the seat.

PARTS AND FITTINGS



THE TYPE OF APPROVED SEAT BELT YOU MUST HAVE

WARNING: THE CAR SEAT SHOULD NOT BE FITTED IN A PASSENGER SEAT OF A CAR THAT HAS AN AIR BAG FITTED.(SRS)



Your child seat can only be installed using a three-point lap and diagonal seat belt in the front or rear passenger seats of the car.

GETTING TO KNOW YOUR CHILD SEAT

Warning: Do not use the seat forward facing until your child weights at least 9kg and least 9kg and can sit up unaided.



**Group0 <10kg
(Rear-facing)**



**Group1 9-18kg
(Forward-facing)**



**Group2 15-25kg
(Forward-facing)**

Your car seat is suitable for children up to 10kg (from birth to 9months approx) when used in the rear facing position, and for children from 9kg to 25kg (9 months to 7 years approx) when used in the forward facing position.

ADJUSTING THE SITTING POSITION



1



2



3

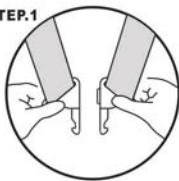


4

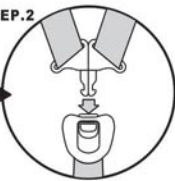
When used forward-facing, the seat can be reclined to 4 positions. Lift the handle under the front of the seat shell until it clicks into the desired position. When used rear-facing seat the seat may only be used in the most reclined position, number 4.

FASTENING THE SAFETY SEAT BUCKLE

STEP.1



STEP.2



STEP.3



Step1. Slot the two metal sections of the buckle connectors together.

Step2. Slot the two buckle connectors into the slot in the top of the buckle until they "click" into place.

Step3. Always check the harness is correctly locked by pulling the shoulder straps upwards.

To release the harness, press the red button on the buckle downwards.

TIGHTENING THE HARNESS



Pull the shoulder straps upwards to remove the slack from the lap sections of the harness then pull the adjuster strap until the harness is fully tightened.

The harness should be adjusted as tightly as possible without causing discomfort to your child.

Ensure that the lap strap portion of the harness is located as low as possible towards the thighs-not around the tummy.

A loose harness can be dangerous. Check the harness adjustment and tighten each time the child is placed in the seat.

SLACKENING THE HARNESS



The harness is slackened by pressing the lever (under the seat cover) on the front of the seat.

Press down on the label marked "Press" as you grip the two shoulder straps with your other hand. Pull the shoulder straps towards you to loosen the harness.

Take care when you adjust the shoulder straps that you do not trap the harness adjuster straps as you press the lever down.

CORRECT SHOULDER STRAP HEIGHT



NO-Too low



NO-Too high



YES-Correct

The harness has 3 positions.

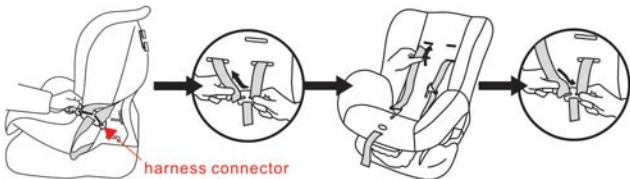
Always check that the shoulder straps are at the correct height for your child. The child's shoulders should always be below the slot for the harness.

CHANGING THE SHOULDER STRAP HEIGHT



Firstly, slacken the harness by pressing the lever (under the seat cover) on the front of the seat.

Press down on the label marked "Press" as you grip the two shoulder straps with your other hand. Pull the shoulder straps towards you to loosen the harness.



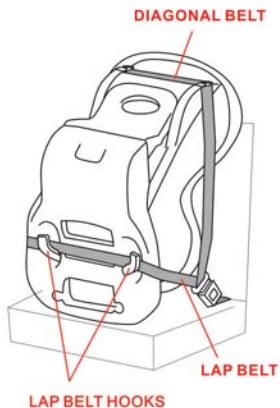
Then turn the side of the car seat to face you. Let your hand through into the diagonal belt slot, take out the harness connector. Slide one of the harness straps off the harness connector.

Then from the front of the seat, pull it through the slot in the seat's backrest and fabric cover. Thread the harness strap back through the next hole up or down on the seat's backrest.

Re-thread the harness strap back onto the harness connector at the back of the seat.

Repeat the same process for the other harness strap. Make sure both of the straps go through slots at the same height.

INSTALLATION: REARWARD-FACING (BIRTH TO 10 KG)



Squeeze the recline handle and adjust the seat to its' most reclined position 4.

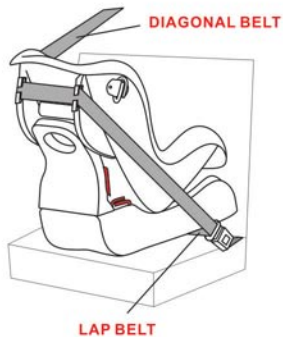
Place the seat onto a suitable passenger seat with a 3 point seat belt with it's back facing the direction of traffic.

Feed the lap portion of the seat belt under the child seat and make sure it is threaded over the lap belt hooks on Bottom of the base.

It is easier to buckle up the car seat belt first and then feed the lap belt over the hooks.

Thread the diagonal (shoulder) belt behind the back of the child seat and through the diagonal belt slot.

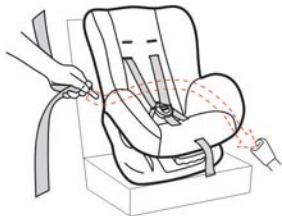
Push down on the seat while pulling the diagonal part of the car seat belt to tighten it.



The illustration to the left shows the final installation step.

Make sure the seat belt has not become twisted. Also check that the cover is not impeding the movement or fit of the seat belt webbing in anyway.

INSTALLATION: FORWARD-FACING (9 - 18 KG)

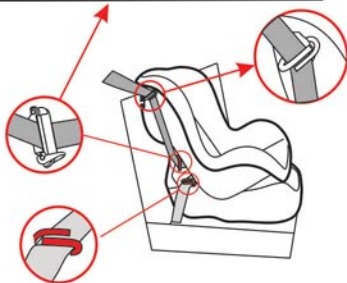
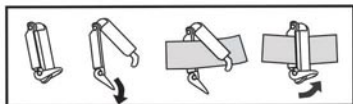


Put the child seat on a passenger seat with a 3 point seat belt.

Place the car seat with its front facing the traffic.

Thread the seat belt through the belt slot to belt guide on the back of child seat, to the other side and fasten the buckle.

Check the seat belt has not become twisted.



Both sections of the seat belt go through the D RING.

As illustrated, make sure the diagonal belt is through the diagonal belt D RING and through the red clamp. Tighten the diagonal belt as much as possible.

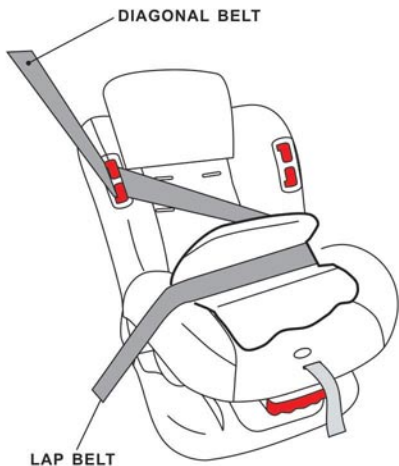
Finally, be sure the lap belt is threaded through the D RING on the base.

Assure another side both sections of the seat belt go through the D RING.

Secure the seat belt by fastening the seat belt clamp, The clamp keeps the seat belt tight and seat securely in place.

NOTE: If you adjust the seat angle, check that the seat belt and clamp are still tight, and re-adjust if necessary.

INSTALLATION: FORWARD-FACING (15- 25 KG)



Put the child seat on a passenger seat with a 3 point seat belt.

Place the car seat with its front facing the traffic.

Thread the diagonal belt and lap belt through the red belt guide from one side to the other side and fasten the buckle.

Check the seat belt has not become twisted and make sure that the seat belt has been fastened.

CARE AND MAINTENANCE

THESE INSTRUCTIONS ARE IMPORTANT. PLEASE READ CAREFULLY AND RETAIN FOR FUTURE REFERENCE.

CLEANING THE BELT LOCK AND HARNESS.

Use only a mild hand soap and warm water. Do not use chemical cleaners and never attempt to bleach or dye the webbing. Allow to dry naturally.

CLEANING THE SEAT COVER.

The cover should be hand wash. Remove all harness straps. Slide the cover off. The covers can now be cleaned.

NOTICE

1. This is a "Universal" child restraint; it is approved to ECE Regulation 44.04 for general use in vehicles and will fit most, but not all, vehicle seats.
2. A correct fit is likely if the vehicle manufacturer has declared in the vehicle handbook that the vehicle is capable of accepting a "Universal" child restraint for this group.
3. This child restraint has been declared Universal under more stringent conditions than those applied to earlier designs which do not carry this notice.
4. If in doubt, consult either the child restraint manufacturer or the retailer.

Only suitable if the vehicle is fitted with 3-point static, 3-point retractor safety belts, approved to UN/ECE Regulation No. 16 or other equivalent standards.